

**Mercer University**  
**College of Health Professions**  
**Graduate/Professional Student Handbook**  
**2024 – 2025**



**Doctor of Physical Therapy Program**  
**Master of Medical Science (Physician Assistant) Program**  
**Master of Public Health Program**  
**Doctor of Public Health Program**  
**Doctor of Psychology Program**  
**Master of Athletic Training Program**

**<http://chp.mercer.edu>**

This Student Handbook is intended to offer a framework of the intended learning environment provided by the College of Health Professions faculty and staff. It is also provided to inform College of Health Professions graduate and professional students of their rights as students, and equally important, their obligations and responsibilities. This Student Handbook does not constitute a contract, expressed or implied, between any applicant, student, faculty, or staff member and neither Mercer University nor the College of Health Professions. *The University Student Handbook supersedes all College and Program Student Handbooks.* Updates and changes are made as necessary to the Student Handbook and become effective whenever the University or College administration so determine and will apply to both prospective students and those already enrolled. The Mercer University College of Health Professions reserves the right to make changes to policies and procedures without notice as necessitated by governing authorities or administrative needs.

Detailed instructions on processes related to the Offices of the Registrar, Student Financial Planning, or Bursar can be obtained by contacting the respective office or visiting their websites.

Questions regarding this Handbook or the information contained may be made in writing to the College of Health Professions Dean's Office.

The Mercer University College of Health Professions is committed to providing equal educational and employment opportunities to all qualified students, employees, and applicants, without discrimination on the basis of race, color, national or ethnic origin, religion, sex, age, or disability, as a matter of policy and as required by applicable state and federal laws (including Title VI, Title VII, Title IX, Sections 503 and 504, ADEA, ADA, E.O. 11246, and Rev. Pro. 75-50).

## Table of Contents

Message from the Dean.....	7
Calendar .....	8
History of the College.....	9
Mission of the College.....	9
Statement of College Goals .....	9
Vision of the College.....	10
Core Values of the College.....	10
Modeled Behaviors .....	10
Mission of the Doctor of Physical Therapy Program .....	11
Mission of the Physician Assistant Program .....	11
Mission of the Public Health Programs .....	11
Mission of the Doctor of Psychology Program .....	11
Mission of the Master of Athletic Training Program .....	11
Profiles of the Graduate.....	11
Academic Administration .....	16
College Faculty and Staff .....	16
Organizational Chart.....	18
Student Policies.....	19
Academic Integrity.....	19
Access and Accommodation Services for Students.....	19
Anti-Hazing.....	19
Artificial Intelligence.....	20
Attendance-Class.....	20
Attendance-Professional Meetings .....	21
Attitude and Conduct.....	21
Campus Healthcare / Immunization and Insurance Requirements.....	21
Cell Phones, Smartphones, and other Mobile Communication Devices .....	22

## Table of Contents (continued)

Children and Guests Policy.....	22
College-wide Assessment .....	23
Communication, Official .....	23
Community of Respect .....	23
Counseling and Psychological Services (CAPS) .....	24
Crime Awareness and Campus Security .....	24
Drug-Free Workplace and Campus Program.....	24
Emergency Preparedness Plan.....	25
Examinations / Make-Up Exams.....	25
Firearms, Weapons, Fireworks / Explosives .....	25
Fundraising.....	25
Grading.....	25
Graduation .....	26
Grievance Policies and Procedures.....	27
Health and Welfare of Students, Mental and Physical .....	27
Health Insurance .....	27
Immunization Policy.....	28
Inclement Weather .....	28
Information Technology Policy .....	28
Intellectual Property.....	29
International Students Policy.....	29
Minors Policy .....	29
Missing Student Policy .....	29
Motorized Vehicle Policy.....	30
Name Badges.....	30
Official Contact Information .....	30
Parking and Traffic Regulations.....	30

## Table of Contents (continued)

Posting of Materials.....	31
Program Specific Handbooks .....	31
Registration .....	31
Religious Observance Policy.....	31
Resignation from the University.....	32
Rights of Students .....	32
Rights Pertaining to Educational Records .....	32
Service Animals and Emotional Support Animals .....	33
Sexual Misconduct (Title IX) and Discrimination.....	33
Social Media and Social Networking .....	33
Solicitation and Distribution of Literature .....	35
Student Progress Deviation Policy.....	35
Tobacco and Smoke-Free Environment Policy.....	35
Travel Policy and Procedures .....	35
Voter Registration Requirements of the Higher Education Amendments.....	36
Withdrawals, Administrative or Medical.....	36
Student Services- <b>Atlanta</b> .....	36
Auxiliary Services / Bear Card.....	36
Bookstore.....	36
Bursar’s Office.....	37
Campus Life- Division of Student Affairs.....	37
Center for Career and Professional Development.....	37
Counseling and Psychological Services .....	38
Food Service / Cafeteria / Catering .....	38
Mercer Police.....	39
Office of Global Engagement.....	39
Registrar’s Office.....	39

## Table of Contents (continued)

Student Financial Planning.....	39
Student Health Centers .....	40
Swilley Library .....	40
Technology Support Services .....	40
<b>Student Services-Macon</b> .....	40
Auxiliary Services / Bear Card.....	40
Bookstore.....	41
Campus Life .....	41
Center for Career and Professional Development.....	41
Counseling and Psychological Services .....	41
Food Service / Cafeteria / Catering .....	42
Mercer Police .....	42
Office of Global Engagement.....	42
Registrar’s Office.....	43
Student Financial Planning.....	43
Student Health Centers .....	44
The Jack Tarver Library.....	44
Technology Support Services .....	44
Wellness and Recreation.....	45
Student Organizations.....	45
Class Officers – Doctor of Physical Therapy .....	47
Class Officers – Physician Assistant.....	48
Class Officers – Public Health .....	48
Class Officers – Clinical Psychology .....	49
Class Officers - Athletic Training.....	49
Campus Student Organizations and Activities .....	49
Mercer Alma Mater .....	50

**Table of Contents (continued)**

Appendix A: Student Code of Conduct / Community of Respect..... 51

Appendix B: Student Leadership Group..... 52

Appendix C: Student Ambassadors ..... 52

Appendix D: Honor Council Constitution ..... 53

## Message from the Dean



COLLEGE OF HEALTH PROFESSIONS

*Office of the Dean*

Dear Students:

The College of Health Professions is an exciting, dynamic environment where students and faculty are engaged in classroom and practice-based activities, research, and service. Our commitment to the College mission is demonstrated by actively seeking students, faculty, and staff who personify our College's core values: *collaboration, compassion, excellence, integrity, justice, learning, professionalism, and service.*

The Physical Therapy, Physician Assistant, Clinical Psychology, Public Health, and Athletic Training faculty are committed to educating outstanding students to become skilled practitioners and leaders in their fields who will, in turn, impact the lives of the patients and community they serve. We are glad you have joined the College of Health Professions team and are looking forward to working with you in the upcoming years!

Sincerely,

A handwritten signature in black ink that reads "Lisa M. Lundquist".

Lisa M. Lundquist  
Dean



3001 Mercer University Drive, Atlanta, Georgia 30341  
1501 Mercer University Drive, Macon, Georgia 31207  
T (678) 547-6208 • F (678) 547-6231 • [chp.mercer.edu](http://chp.mercer.edu)

# Calendar for CHP Graduate and Professional Programs

## MERCER COLLEGE OF HEALTH PROFESSIONS CALENDAR 2024-2025

### **Fall 2024**

DPT Orientation	August 15-16
MPH Orientation	August 15
PsyD Orientation	August 16
DPT White Coat Ceremony	August 16
Classes Start (Atlanta: DPT, MPH, PsyD, PA, DrPH; Macon: AT)	August 19
Drop/Add Ends	August 26
Labor Day Holiday	September 2
Application Deadline for Spring or Summer Graduation	October 1
Fall Break (Macon: AT)	October 3-4
Course Withdrawal Deadline	October 21
Registration for Spring Begins	TBD
Fall Break (Atlanta: DPT, MPH, PsyD, PA, DrPH)	November 25-26
Thanksgiving Break	November 27-29
Classes and Exams End	December 13
Grades Due	December 17

### **Spring 2025**

DrPH Orientation	January 2-3
PA Orientation	January 3
Classes Start (Atlanta: DPT, MPH, PsyD, PA, DrPH; Macon: AT)	January 6
PA White Coat Ceremony	January 10
Drop/Add Ends	January 13
Martin Luther King, Jr. Holiday	January 20
Spring Break (Atlanta and Macon)	March 3-7
Course Withdrawal Deadline	March 19
MPH and DrPH Pinning Ceremony	March 28
Good Friday Holiday	April 18
Registration for Summer and Fall Begins	TBD
PsyD Pinning Ceremony	May 2
Classes and Exams End	May 2
Grades Due	May 6
College of Health Professions Hooding Ceremony	May 9
Commencement (Atlanta)	May 11
Baccalaureate (Macon)	May 11
Commencement (Macon)	May 12

### **Summer 2025**

Classes Start (Atlanta: DPT, MPH, PsyD, PA, DrPH)	May 12
Drop/Add Ends	May 19
Memorial Day Holiday	May 26
AT Orientation	June 6
Classes Start (Macon: AT)	June 9
Course Withdrawal Deadline	June 29
Independence Day Holiday	July 4
Classes End (Atlanta)	August 1
Grades Due	August 6



## **History of the College**

The College of Health Professions is comprised of six disciplines: Physical Therapy, Physician Assistant Studies, Public Health, Clinical Psychology, Athletic Training, and Kinesiology. The College offers the doctoral-level physical therapy program, doctoral-level clinical psychology program, doctoral-level public health program, master's-level physician assistant program, master's-level public health program, master's-level athletic training program, bachelor's-level public health program, and bachelor's-level kinesiology program. The Department of Physical Therapy offers an Orthopaedic Manual Physical Therapy residency program, a Neurologic Physical Therapy residency program, a Cardiovascular and Pulmonary residency program, and a fellowship in Orthopaedic Manual Physical Therapy.

## **Mission of the College**

The College of Health Professions seeks to prepare students to improve the health and quality of life of individuals and society through excellence in teaching, research, and service.

## **Statement of College Goals**

- Provide an education that is effective, innovative, and comprehensive.
- Foster an environment that is caring, equitable, and responsive toward all stakeholders.
- Ensure quality of programs through continuous assessment and improvement.
- Encourage diversity and adhere to the values of the University's Judeo-Christian heritage while respecting the pluralistic values of our society.
- Engage students in active learning to enhance critical thinking and problem solving skills.
- Foster personal and professional growth and a commitment to lifelong learning.
- Support a highly qualified faculty in their pursuit of teaching, scholarly activity, and service in recognition that these activities are integral components of continuing professional growth.
- Provide the infrastructure to support research that integrates components of basic science, public health, clinical interventions, and pedagogical innovation.
- Prepare graduates to assume leadership roles in their communities and profession.
- Provide postgraduate education including graduate programs, residencies, fellowships, and certificate programs.
- Engage in interprofessional education to develop mutual understanding of and respect for the contributions of various disciplines for the betterment of individuals and society.

## Vision of the College

The College of Health Professions will be nationally recognized for promoting and improving health through excellence in education, leadership, and innovation.

## Core Values of the College

The College of Health Professions bases its educational programs and position in the healthcare community upon certain core values. The core values of the College are:

*Collaboration* – working together and respecting each other’s contributions.

*Compassion* – showing empathy and concern for the wellbeing of others.

*Excellence* – performing at the highest level.

*Integrity* – unwavering adherence to an ethical code of conduct.

*Justice* – committing to fairness and equity in the treatment of others.

*Learning* – acquiring, synthesizing, understanding, and assimilating new knowledge and information.

*Professionalism* – exhibiting appropriate behaviors and adhering to an established code of conduct.

*Service* – offering our talents and skills toward the betterment of our communities.

## Modeled Behaviors

### Collaboration

- Recognizes the value of others, their ideas, beliefs, diversity, and cultural heritage.
- Actively participates in ongoing education, professional, and interprofessional activities.

### Compassion

- Places other’s interest ahead of his/her own.
- Is sensitive to the personal concerns and beliefs of others.

### Excellence

- Initiates innovative ways to increase efficiency, effectiveness, and productivity.
- Develops new approaches to improve health and quality of life.

### Integrity

- Is fair, straight-forward, and truthful.
- Admits, corrects, and learns from mistakes.
- Honors commitments and accepts responsibility for actions.

### Justice

- Addresses any dishonest or unethical behavior both upwards and peer-to-peer.
- Treats everyone fairly and is genuinely concerned about the welfare of others.

### Learning

- Actively participates in continuous professional development.
- Shares knowledge of new practices and procedures, evolving sciences, and leading edge technologies.
- Promotes development of interprofessional learning and collaborative practice.

### Professionalism

- Expresses concerns about work issues and works constructively to create a resolution.
- Supports the University’s and College’s mission, goals, and policies and procedures.

### Service

- Advocates for improved health, wellness, and quality of life for patients and society.
- Actively participates in community-based initiatives.

## **Mission of the Doctor of Physical Therapy Program**

The mission of Mercer University's Physical Therapy Program is to prepare doctors of physical therapy who are advocates for the health and wellness of individuals and society, and who are dedicated to patient/client-centered clinical excellence, lifelong professional development, and scholarly activities.

## **Mission of the Physician Assistant Program**

The mission of the Mercer University College of Health Professions Physician Assistant Program is to educate patient-centered medical providers of the highest quality who are critical thinkers, leaders, and lifelong learners.

## **Mission of the Public Health Programs**

The mission of the Mercer University College of Health Professions Department of Public Health is to produce public health professionals through integrating public health education, service, and research to engage communities (including minority, rural, or aging populations) in improving population health, eliminating health disparities, and achieving health equity and social justice.

## **Mission of the Doctor of Psychology Program**

The mission of the Mercer University College of Health Professions Doctor of Psychology Program is to prepare psychologists as integrated healthcare practitioners who contribute to and apply scientific knowledge of human behavior to benefit individuals, systems, and society.

## **Mission of the Master of Athletic Training Program**

The mission of Mercer University's Master of Athletic Training Program is to prepare patient-centered athletic trainers who are devoted to improving healthcare for athletes and the greater community, and who are committed to professional development, leadership, and advocacy for the profession.

## **Profiles of the Graduate**

The **Doctor of Physical Therapy** graduate of the College of Health Professions of Mercer University will:

- Provide effective and efficient patient/client-centered care to diverse populations across the lifespan.
- Incorporate sound clinical reasoning and problem solving to make evidence-based practice decisions and recommendations in all aspects of patient/client management.
- Adhere to professional and ethical standards of conduct in compliance with the American Physical Therapy Association (APTA) and to the laws and guidelines that regulate the practice of physical therapy.

- Participate as providers and advocates for the health promotion, wellness, and fitness of individuals and society.
- Manage available human, financial, material, and/or technological resources in a variety of traditional and nontraditional settings.
- Pursue lifelong professional development regarding clinical excellence, service, and scholarship.
- Collaborate effectively as a member and leader of an interprofessional team to provide evidence-based and patient-centered care.

The **Physician Assistant** graduate of the College of Health Professions of Mercer University will be able to:

- Demonstrate the knowledge and skills necessary for entry-level practice as a physician assistant.
- Deliver primary care in a variety of clinical settings across the lifespan.
- Collaborate effectively as a member and leader of an interprofessional team to provide evidence-based and patient-centered care.
- Pursue lifelong professional development in clinical practice, service, and leadership.

The **Master of Public Health** graduate of the College of Health Professions of Mercer University will be able to:

- Apply epidemiological methods to the breadth of settings and situations in public health practices.
- Select quantitative and qualitative data collection methods appropriate for a given public health context.
- Analyze quantitative and qualitative data using biostatistics, informatics, computer-based programming and software, as appropriate.
- Interpret results of data analysis for public health research, policy, or practice.
- Compare the organization, structure and function of healthcare, public health, and regulatory systems across national and international settings.
- Discuss the means by which structural bias, social inequities, and racism undermine health and create challenges to achieving health equity at organizational, community, and societal levels.
- Assess population needs, assets, and capacities that affect communities' health.
- Apply awareness of cultural values and practices to the design or implementation of public health policies or programs.
- Design a population-based policy, program, project, or intervention.
- Explain basic principles and tools of budget and resource management.
- Select methods to evaluate public health programs.
- Discuss multiple dimensions of the policy-making process, including the roles of ethics and evidence.
- Propose strategies to identify stakeholders and build coalitions and partnerships for influencing public health outcomes.

- Advocate for political, social, or economic policies and programs that will improve health in diverse populations.
- Evaluate policies for their impact on public health and health equity.
- Apply principles of leadership, governance, and management, which include creating a vision, empowering others, fostering collaboration, and guiding decision-making.
- Apply negotiation and mediation skills to address organizational or community challenges.
- Select communication strategies for different audiences and sectors.
- Communicate audience-appropriate public health content, both in writing and through oral presentation.
- Describe the importance of cultural competence in communicating public health content.
- Perform effectively on interprofessional teams.
- Apply systems thinking tools to a public health issue.
- Analyze theoretical frameworks for disparity causation
- Describe actions needed to build internal infrastructure to advance health equity in organizations
- Evaluate empowerment strategies for viability in diverse communities including disparate, rural, and aging populations
- Develop community capacity for leadership among diverse populations
- Engage stakeholders to develop the action model/change model schemas to build sustainable programs and systems in vulnerable communities

The **Doctor of Public Health** graduate of the College of Health Professions of Mercer University will be able to:

- Explain qualitative, quantitative, mixed methods and policy analysis research and evaluation methods to address health issues at multiple (individual, group, organization, community and population) levels.
- Design a qualitative, quantitative, mixed methods, policy analysis or evaluation project to address a public health issue.
- Explain the use and limitations of surveillance systems and national surveys in assessing, monitoring and evaluating policies and programs and to address a population's health.
- Propose strategies for health improvement and elimination of health inequities by organizing stakeholders, including researchers, practitioners, community leaders and other partners.
- Communicate public health science to diverse stakeholders, including individuals at all levels of health literacy, for purposes of influencing behavior and policies.
- Integrate knowledge, approaches, methods, values and potential contributions from multiple professions and systems in addressing public health problems.
- Create a strategic plan.

- Facilitate shared decision making through negotiation and consensus-building methods.
- Create organizational change strategies.
- Propose strategies to promote inclusion and equity within public health programs, policies and systems.
- Assess one’s own strengths and weaknesses in leadership capacities, including cultural proficiency.
- Propose human, fiscal and other resources to achieve a strategic goal.
- Cultivate new resources and revenue streams to achieve a strategic goal.
- Design a system-level intervention to address a public health issue.
- Integrate knowledge of cultural values and practices in the design of public health policies and programs.
- Integrate scientific information, legal and regulatory approaches, ethical frameworks and varied stakeholder interests in policy development and analysis.
- Propose interprofessional team approaches to improving public health.
- Assess an audience’s knowledge and learning needs.
- Deliver training or educational experiences that promote learning in academic, organizational or community settings.
- Use best practice modalities in pedagogical practices.

The **Doctor of Psychology** graduate of the College of Health Professions of Mercer University will demonstrate:

- Foundational knowledge of the core domains of the science of psychology, including affective, biological, cognitive, developmental, and social aspects of behavior, and history and systems of the discipline.
- Understanding of psychological science, the research methodology involved in generating knowledge, and the scientific foundations of the practice of psychology.
- Knowledge, relational skills, and technical skills involved in evidence-based assessment, diagnosis, intervention, and consultation.
- The ability to impart knowledge and skills to trainees and to colleagues along with the ability to assess the acquisition of such knowledge and skills.
- Understanding of research and clinical practice within a context of ethical and professional attitudes, values, and standards that include self-reflection, self-assessment, and self-care.
- Understanding of dimensions of diversity that impact personal and professional interactions with diverse individuals, groups, and communities.
- Understanding of the perspectives of other healthcare disciplines and an ability to collaborate effectively in interprofessional activities to promote individual, institutional, and/or systems-level change.

The **Master of Athletic Training** graduate of the College of Health Professions of Mercer University will:

- Demonstrate the knowledge, skills, and clinical abilities that will prepare her/him for entry-level practice as an athletic trainer.
- Use patient/client values and circumstances, clinical expertise, and research to guide clinical decision making.
- Adhere to professional and ethical standards of conduct in compliance with the National Athletic Trainers' Association (NATA) and to the laws and guidelines that regulate the practice of athletic training.
- Collaborate effectively as a member and leader of an interprofessional healthcare team to provide evidence-based and patient-centered care.
- Pursue professional development through continuing education and active involvement with the NAT

## Academic Administration

William D. Underwood, J.D.  
Scott Davis, PhD  
Lisa Lundquist, PharmD, BCPS  
Nannette Turner, PhD, MPH  
Sharon Beasley, PhD, RN, CNE, NEA-BC  
Suzie Madden, DrPH, MPH  
Tami Phillips, PT, EdD, DPT, MBA  
Jennifer de la Cruz, MMSc, PA-C  
Cheryl Gaddis, DrPH, MPH, CHES  
Michelle Robbins, PhD  
Rachel Le, PhD, LAT, ATC

President, Mercer University  
Provost, Mercer University  
Dean, College of Health Professions  
Associate Dean, College of Health Professions  
Assistant Dean, College of Health Professions  
Assistant Dean, College of Health Professions  
Chair, Department of Physical Therapy  
Interim Chair, Dept of Physician Assistant Studies  
Chair, Department of Public Health  
Chair, Department of Clinical Psychology  
Chair, Department of Exercise Science

## College Faculty and Staff

### Dean's Office

678.547.6208

Lundquist, Lisa, PharmD, BCPS  
Turner, Nannette, PhD, MPH  
Beasley, Sharon, PhD, RN, CNE, NEA-BC  
Madden, Suzie, DrPH, MPH  
Uzzell, Denise  
Green, Pamela  
Jones, Whitney

Dean and Professor  
Associate Dean and Professor of Public Health  
Assistant Dean for Accreditation and Assessment  
Assistant Dean for Undergraduate Academic Affairs  
Director of Finance and Administration  
Executive Assistant to the Dean  
Instructional Design Specialist

### Admissions and Student Affairs Office

678.547.6391

Ellison, Laura, MBA  
Mireles, Carol  
Ciniglio, Jo  
Sheorn, Sheila

Director, Admissions and Student Affairs  
Assistant Director of Admissions  
Admissions Counselor  
Enrollment Associate

### Physical Therapy

678.547.6778

Phillips, Tami, PT, EdD, DPT, MBA  
Dale, Daniel, PT, DPT  
Ebert, Jeffrey, PT, DPT  
Fraher, Lisa PT, DPT  
Lucado, Ann, PT, PhD, CHT  
McMahon, Tim, PT, DPT, FAAOMPT  
Orton, Nick, PT, DPT, OCS  
Perlow, Ellen, PT, DPT  
Taylor, David, PT, DPT  
Taylor, Leslie, PT, PhD, MS

Department Chair and Clinical Professor  
Clinical Assistant Professor; Asst. Director of Clinical Education  
Clinical Associate Professor  
Visiting Assistant Professor  
Associate Professor  
Clinical Assistant Professor; Director, Physical Therapy Clinic  
Clinical Assistant Professor; Director of Anatomy Lab  
Clinical Associate Professor  
Clinical Associate Professor; Director of Clinical Education  
Professor Physical Therapy; Director, University Center for Gerontology  
Clinical Associate Professor  
Associate Professor  
Clinical Coordinator  
Academic Support Specialist  
Patient Administrative Coordinator, Physical Therapy Clinic

Tunney, Niamh, PT, DPT, MS  
Wendland, Deborah, PT, DPT, PhD  
Williams, Carmen, EdD  
Darden, Jatae, MS  
Robles, Patricia



**Physician Assistant Studies**

678.547.6214

de la Cruz, Jennifer, MMSc, PA-C  
Baeten, Robert, DMSc, PA-C, FCCP  
Clark, Amanda, MMSc, PA-C  
Dickerson, Lisa, MD  
Hamilton, Caroline, MMSc, PA-C  
Hill, Jonathan, MMSc, PA-C  
Hoover, Lauren, MMSc, PA-C  
Jackson, Shannon, MSPAS, PA-C  
Lepp, Erin, MMSc, PA-C  
Mattingly, Jill, DHSc, MMSc, PA-C  
Mullins, Patricia, MD  
Sadowski, Catherine, MHS, PA-C  
Salmon, Arlene, MMSc, MBA, PA-C  
Brown, Monica  
Johnson, Laura  
Clemmons, Tierra  
Edwards-Wright, Cynthia  
Deakin, Tyler

Interim Department Chair and Clinical Associate Professor  
Clinical Assistant Professor  
Clinical Assistant Professor; Director of Clinical Education  
Clinical Associate Professor  
Clinical Assistant Professor  
Clinical Assistant Professor  
Clinical Assistant Professor  
Clinical Assistant Professor; Academic Director  
Clinical Associate Professor; Coordinator, Community Engagement  
Clinical Associate Professor  
Medical Director; Clinical Associate Professor  
Clinical Associate Professor  
Clinical Assistant Professor; Assistant Academic Director  
Academic Support Specialist  
Coordinator of Experiential Learning  
Clinical Coordinator  
Credentialing Coordinator  
Academic Support Specialist

**Public Health**

678.547.6492

Gaddis, Cheryl, DrPH, MPH, CHES  
Cattledge, Gwendolyn, PhD  
Chen, Huey, PhD  
Gebrekristos, Hirut, PhD, MPH  
Larson, Rebecca, DrPH, MS  
Madden, Suzie, DrPH, MPH  
Mathis, Mary, DrPH, MPH  
Morosanu, Liliana, MPH  
Sultan, Dawood, PhD, MA  
Love-Smith, Barbara  
Rooney, Joseph

Department Chair and Associate Professor of Practice  
Professor of Practice; Director of the DrPH Program  
Professor; Dir. Of the Center for Evaluation & Applied Research  
Associate Professor  
Assistant Professor of Practice  
Assistant Dean for Undergraduate Academic Affairs; Asst. Professor  
Assoc. Professor of Practice; Director of the BSPH Program  
Instructor; Coordinator, Program & Student Academic Advancement  
Associate Professor of Practice  
Administrative Support Associate  
Administrative Support Associate

**Clinical Psychology**

678.547.6591

Robbins, Michelle, PhD  
Curry, Toi, PsyD  
Kemp, Gail, PhD  
Lakind, Davielle, PhD  
McCullough, Mary Beth, PhD  
Stillman, Tony, PhD  
Townsend, Katie

Department Chair and Clinical Professor  
Clinical Assistant Professor  
Assistant Professor  
Assistant Professor  
Assistant Professor  
Clinical Associate Professor; Director, Clinical Training  
Academic Support Specialist

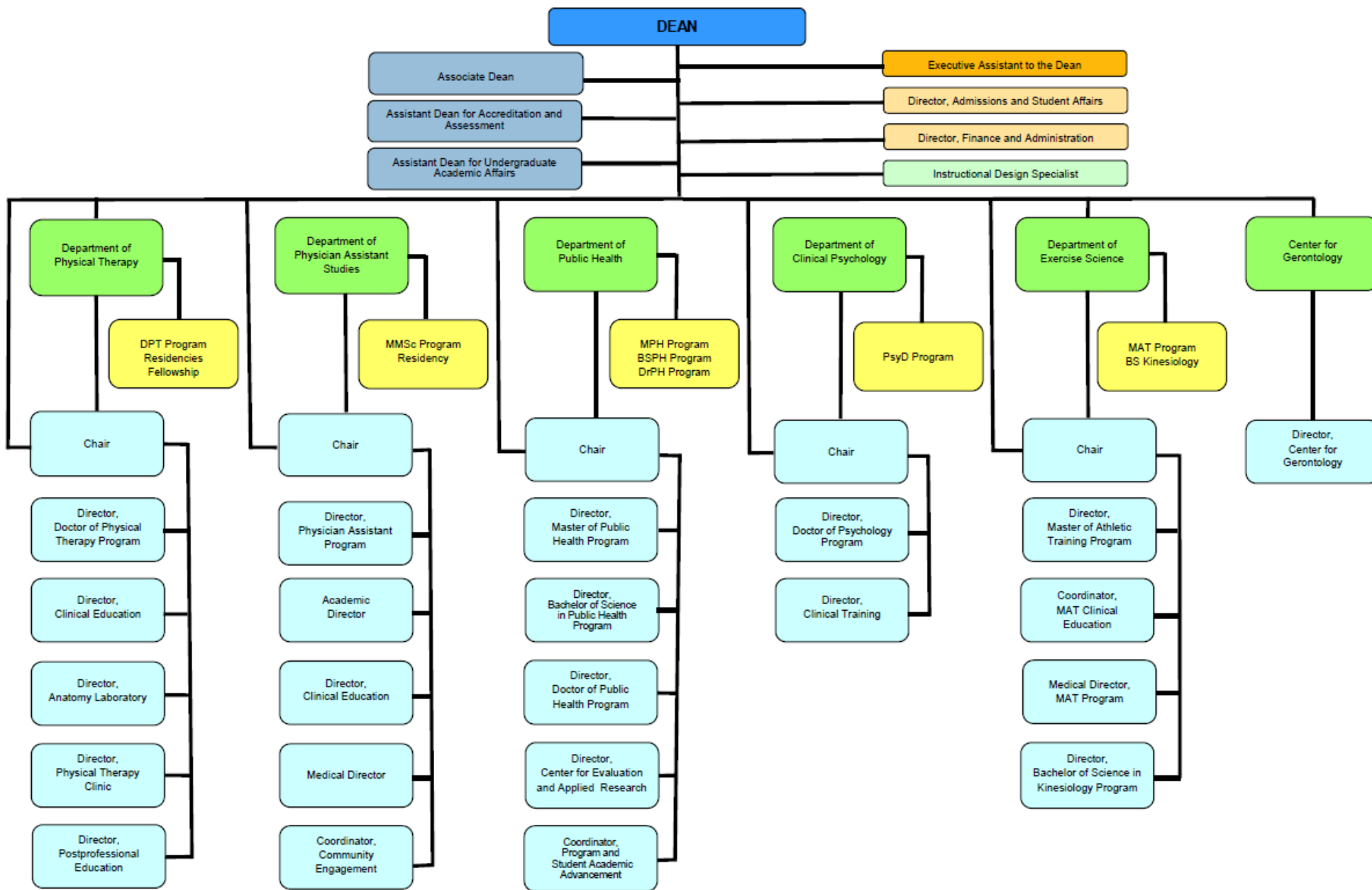
**Exercise Science**

478.301.5530

Le, Rachel, PhD, ATC  
Astin, Matthew, MD, MPH  
Chen, Sisi, PhD  
Cicone, Zackary, PhD  
Johnson, Rachel, PhD, LAT, ATC  
Markie, Christopher, DAT, LAT, ATC  
Mulholland, Annie, PhD  
Rawdon, Christopher, PhD  
Webb, Heather, PhD, ATC  
Rooney, Joseph

Department Chair and Assistant Professor; Director, MAT Program  
Clinical Assistant Professor; Medical Director, MAT Program  
Assistant Professor  
Assistant Professor  
Assistant Professor  
Clinical Assistant Professor; Coordinator, MAT Clinical Education  
Assistant Professor  
Assistant Professor  
Associate Professor; Director, BS Kinesiology Program  
Administrative Support Associate

# College of Health Professions Organizational Chart



## **Student Policies**

The following policies have been adopted by Mercer University and the College of Health Professions for students. These policies describe what is expected of you as a student. It is your responsibility to familiarize yourself with the information presented in this *Student Handbook*, along with the other information available in the University Student Handbook and within your specific program of study.

The policies in this handbook have evolved through a continual process of feedback, discussion, and exchange among students, faculty, and administrators. Although no policy is considered totally inflexible, the present policies will be supported and adhered to by both students and faculty until changed or amended through appropriate channels. The Mercer University College of Health Professions reserves the right to make changes to policies and procedures without notice as necessitated by governing authorities or administrative needs. The University Student Handbook supersedes all College and Program Student Handbooks.

## **Academic Integrity**

Mercer University strives to be a community of respect, which includes respect for academic integrity. Students operate under an honor system and will exhibit the values of honesty, trustworthiness, and fairness regarding all academic matters. Students, faculty, and staff are expected to report any violations in the forms of, but not limited to, cheating, plagiarism, and academic dishonesty to the honor council appropriate for their campus and program.

Procedures related to Honor Systems and Academic Integrity are outlined in the specific handbooks for each campus and can be found on the Provost website at: <https://provost.mercer.edu/office-of-the-provost/honor-system/>.

## **Access and Accommodation Services for Students**

Mercer University is committed to making all of its programs, services, and activities fully accessible to all students. Students requesting accommodations for a diagnosed physical, medical (chronic health condition), psychological, or learning disability and temporary injuries must first self-identify by applying for accommodations with the Office of Access and Accommodation. Students requesting accommodations for pregnancy, childbirth, lactation, and any medical condition related to pregnancy or childbirth must request accommodations with the Title IX Coordinator. The contact information for the Title IX Coordinator is located at <https://titleix.mercer.edu>.

For more information about policies and procedures regarding access and accommodation, please refer to the Mercer University Student Handbook available on the Mercer website at: <https://provost.mercer.edu/handbooks/studenthandbook.cfm>.

## **Anti-Hazing**

Mercer University believes that the safety and well-being of the student body and Mercer community are of utmost importance to foster a positive educational environment that upholds the University's Community of Respect doctrine. Hazing is a serious violation of this goal and potentially undermines and threatens the mental and physical well-being of our students. Therefore, Mercer is actively

committed to addressing hazing and maintains an Anti-Hazing Policy in accordance with the Max Gruver Act that was adopted on July 1, 2021 in the State of Georgia.

Hazing is strictly prohibited at all Mercer campus locations and in all programs and organizations affiliated with Mercer, whether on or off campus. All reports of suspected hazing are investigated under the Student Code of Conduct. Student organizations suspected of hazing will be investigated as outlined under our procedures for Non-Academic Misconduct Process for Student Organizations. If a student or student organization is in violation of the Anti-Hazing Policy, the student or organization may be subject to discipline, including but not limited to, probation, suspension, or expulsion.

The policy can be found at this link: <https://policies.mercer.edu/anti-hazing-policy/>.

## **Artificial Intelligence**

Generative artificial intelligence (AI) is typically defined as the ability of a machine to perform cognitive functions associated with human minds, such as perceiving, reasoning, learning, and problem solving. Usage depends on the specific purpose and pedagogical or intellectual context.

- Generative AI must be used responsibly and consistently with academic and professional codes of ethics, standards of citations, the University policy on academic integrity, and the University Student Code of Conduct.
- Authors of content generated by AI are responsible for that content.
- Faculty are responsible for deciding whether, when, and how generative AI is used in courses, programs, and/or research.
- Faculty must clearly communicate generative AI use to students in course syllabi, assignment instructions, and research guidelines.
- Students are responsible for understanding and adhering to faculty communications for using generative AI in each of their courses and research activities.

## **Attendance-Class**

Attendance at the College of Health Professions is a privilege and not a right. Attendance at all scheduled classes, laboratory sessions, reviews, recitations, examinations, practice experiences, experiential meetings, clinical rotations, or other curricular activities is expected. The following policy governs attendance:

Each professor is charged with the responsibility of establishing an absentee policy for his/her course subject to the approval of the Department Chair. This policy must be a part of the course syllabus distributed to students. In those cases in which the professor does not wish to establish an absentee policy, absenteeism cannot be considered in determining the grade for the course.

Students should also refer to additional policy information listed in the program-specific policies and/or handbooks.

## **Attendance-Professional Meetings**

The College acknowledges that viable professional organizations are essential to the well-being of the profession and contribute to the maintenance of high professional standards thereby assisting in assuring that healthcare professionals provide their patients with state-of-the-art healthcare. As a result, the College will endeavor to encourage its students to become actively involved in professional organizations and will provide them with the opportunity to do so. The College also recognizes that the primary responsibility of students is to achieve academic excellence and that any activity which hinders their pursuit of academic excellence is not in the best interest of the students or profession. Students must obtain, in writing at least one month prior to the meeting, approval from the course coordinator and the Department Chair to be excused from classes/examinations. In such cases students will be required to meet the requirements of the course coordinator(s) whose examination(s) was (were) missed to satisfy the requirements for the course(s) involved.

## **Attitude and Conduct**

The University expects students to conduct themselves in a manner that reflects their maturity and their awareness that matriculation at the University is a privilege afforded only to those who share the ideals of an academic community. Any conduct determined as having an adverse effect on the University community may result in disciplinary action, including dismissal. The Code of Professional Conduct is enforced both on University premises and at University-sponsored events held off campus. Students should familiarize themselves with the Code of Professional Conduct. The Code of Professional Conduct appears in its entirety in the Student Handbook Appendix.

## **Campus Healthcare/Immunization and Insurance Requirements**

Campus Healthcare Services (CHCS) is designed to provide limited services for acute illnesses and treatments and medications during regular hours of operation for currently enrolled students. Services provided include administration of a variety of immunizations and PPD tests, evaluation and treatment of illnesses, and if necessary, referrals to off-campus resources for medical problems. Appointments are encouraged but walk-ins are welcome.

On the first visit all students will receive a copy of the current Health Insurance Portability & Accountability Act (HIPAA) Policy and will need to sign a statement of receipt of the HIPAA Policy.

Campus Healthcare Services is currently staffed by two Family Nurse Practitioners and an Administrative Assistant, all supported by underwritten protocols of a physician consultant. The physician is available for appointments during the week and referrals to specialists are made as needed.

In the event of a serious illness or accident when the clinic is closed, the student should report to the nearest Urgent Care Facility or Emergency room for immediate treatment. The student must contact CHCS within 48 hours to obtain an Emergency Referral, only if using student health insurance. The Mercer Police must be notified of any injury occurring on campus. They may be reached at 678.547.6130 or by using a Mercer phone and dialing 6911 in Atlanta, or 478-301-4357 in Macon. Someone should stay with the injured person until the Mercer Police arrive.

Students need to be aware that health services will be billed to either or both student health insurance companies, or private health insurance. A copy of the front and back of the health insurance card should be submitted to Campus Healthcare Services prior to admission if the student will be using an external health insurance policy (non-Mercer policy). Payment for services not covered by insurance, such as lab tests or medications, is the responsibility of the student.

All students are required to complete a Health Information Form to be turned in with proof of required immunizations prior to enrollment. Incomplete or inaccurate information may result in student registration being delayed or blocked. All students living on campus will be required to show proof of the Meningitis vaccine or return a signed Meningococcal Disease Information Acknowledgment form. This is required by Georgia law.

University policy mandates that all students enrolled in 3 or more hours (except those in regional academic centers) must maintain health insurance coverage. All international students must carry active health insurance regardless of hours enrolled or campus attended. Students are automatically charged by the University for health insurance when they register for classes. This charge can be removed by completing the online waiver form before the end of the waiver period. To complete the waiver process, go to <https://bursar.mercer.edu/studentinsurance/>. Students must complete the waiver before the stated deadline. Failure to complete this form before the deadline will result in insurance being purchased for you and charged to your account.

For more information about Healthcare, Immunization and Insurance requirements, please refer to the Mercer University Student Handbook available online at: <http://provost.mercer.edu/handbooks/studenthandbook.cfm>.

## **Cell Phones, Smartphones, and other Mobile Communication Devices**

Out of courtesy for all those participating in the learning experience, all cell phones/smart phones, and other mobile communication devices must be turned off or silenced before entering any classroom, lab, or formal academic or performance event.

For more information about Cell Phones, Smartphones, and other Mobile Communication Devices, please refer to the Mercer University Student Handbook available online at: <http://provost.mercer.edu/handbooks/studenthandbook.cfm>.

## **Children and Guests Policy**

The campuses, regional academic centers, and all other facilities of Mercer University are restricted to students, faculty, staff, and guests of the University, except when all or part of the University location, its buildings, or facilities are open to the general public for a designated time and purpose.

A “guest” of the University is a person invited by an officer, employee, or student to visit the campus at a specific time and place for a designated purpose. Personal guests of students are permitted as long as they restrict the length of their campus visits and abide by all appropriate guidelines and policies related to their visit, including those pertaining to Housing and Residential Life.

Arranging childcare is the personal responsibility of students who have children. Students are not authorized to bring children to a Mercer facility for extended periods of time. Frequent or lengthy visits of children are not permitted, as they may create disruptions and distractions and present a liability to the University for their safety. Children, other than those specifically enrolled in a youth specific program, may not attend class, use University equipment, or be left unattended on University property.

For more information on the Children and Guests Policy, please refer to the Mercer University Student Handbook available online at:

<http://provost.mercer.edu/handbooks/studenthandbook.cfm>.

## **College-wide Assessment**

As part of the ongoing assessment, evaluation, and review of each program's curriculum, student information is used for evaluation and feedback to improve the educational program and to document student progress. Course evaluations, faculty evaluations, student progress assessment and feedback, surveys, videotaped encounters, and group work are included in this process. Data are primarily reported in the aggregate, and individual identification will be protected. There will be some instances when videotape review will be used to teach interviewing skills and group dynamics. All persons being videotaped will give their consent prior to any use of the videotaped material. When data are used for documenting and publishing about the curriculum and student outcomes, appropriate institutional review will occur and aggregate data used. If the use of identifying information is needed, appropriate student consent will be obtained.

## **Communication, Official**

All students are assigned a Mercer email address. Mercer University will use this address for any official email correspondence to students. In the event of an emergency, Mercer will utilize multiple methods, including emergency text messaging, to notify students. Students are expected to maintain and update their cell phone numbers via MyMercer.

## **Community of Respect**

Mercer University strives to be a Community of Respect where everyone is held in mutual high regard. Because every human being is created in the image of God, each person deserves to be treated with respect and civility. Standards of conduct are based on values of mutual respect:

**Respect for Academic Integrity:** We value a community that encourages an academic atmosphere. We believe that honesty is important to learning.

**Respect for Other Persons:** We value the worth of every individual in the community, and we respect the dignity of each member in the community. We take responsibility for the consideration of the rights of others.

**Respect for the University Community:** We value showing respect for the rights and property of others. We take responsibility to act to maintain University property.

Respect for Community Authority: We acknowledge and value our privileges and rights as members of the University community. We take responsibility for acting to uphold community standards.

For more information about the Community of Respect, Student Rights, the University Student Code of Conduct, and the Campus Judicial Process, please refer to the Mercer University Student Handbook available online at:

<http://provost.mercer.edu/handbooks/studenthandbook.cfm>.

## **Counseling and Psychological Services (CAPS)**

Counselors support Mercer students by providing personal, academic, and career counseling. These services are provided through short-term individual counseling, group counseling, and psychoeducational programming.

For more information about CAPS, please refer to additional information available online at:

<https://counseling.mercer.edu/about/>.

## **Crime Awareness and Campus Security**

Mercer University places a high priority on keeping its campuses/regional academic centers safe for its students, employees, and visitors. The Mercer Police Department has primary responsibility for the security of the campus. All Mercer Police officers are certified by the Georgia Peace Officer Standards and Training Council as having met the qualifications and training requirements for police officers in Georgia. They are authorized to exercise law enforcement powers, including the power of arrest, on all campuses.

For more information about Crime Awareness, Campus Security at Mercer, Reporting Crimes and Emergencies, and/or Campus Statistics, please refer to the Mercer University Student Handbook, available online at: <http://provost.mercer.edu/handbooks/studenthandbook.cfm>.

## **Drug-Free Workplace and Campus Program**

Mercer University shares the widespread national concern with the serious threat to health, safety, and welfare posed by the unlawful use of drugs and the abuse of alcohol, especially in the workplace and on college campuses. As a matter of University policy, growing out of the University's historic mission and character, and in keeping with applicable Federal and State laws, the University has adopted and implemented a program to provide a drug-free workplace and campus/center for all its students and employees and to prevent the illicit use of drugs and abuse of alcohol. View the full Drug-Free Workplace and Campus Program policy at <https://hr.mercer.edu/policies/upload/Drug-FreeProgram.pdf>.

In addition to abiding by the regulations prescribed by the Mercer University Student Handbook, students must abide by all local, state, and federal laws pertaining to drug and alcohol use. Violations of such laws, whether they occur on or off campus, are subject to internal University investigation, review, and action. For more information about Mercer University's policy concerning drugs and alcohol, please refer to the section titled "Drug and Alcohol Policy" in the Mercer University Student Handbook available online at: <http://provost.mercer.edu/handbooks/studenthandbook.cfm>.



## **Emergency Preparedness Plan**

For information about the Emergency Preparedness Plan at Mercer, including Emergency Response Guidelines and a Quick Emergency Contact Guide, please refer to the Mercer University Student Handbook Supplement available online at:

<http://provost.mercer.edu/handbooks/studenthandbook.cfm>.

## **Examinations / Make-Up Exams**

Students must report for scheduled examinations. Permission for a make-up examination due to illness or other emergency may be obtained from the course coordinator (please refer to program-specific policies).

It is the responsibility of the course coordinator of each class to describe in the syllabus the course policy for making up examinations that are cancelled due to inclement weather or some emergency.

## **Firearms, Weapons, Fireworks/Explosives**

Firearms/weapons are not allowed on Mercer University campus or Regional Academic Center (RAC) facilities except when required for students who are in uniform (police, law enforcement officers, etc.) in an official duty status.

For more information about the Firearms, Weapons, Fireworks/Explosives Policy, including a comprehensive list of prohibited items, please refer to the Mercer University Student Handbook available online at: <http://provost.mercer.edu/handbooks/studenthandbook.cfm>.

## **Fundraising**

Permission for students/organizations to sell any items on campus must first be obtained in advance from the Director of Admissions and Student Affairs and program Department Chair. Guidelines for granting/denying requests for sales will be determined by whether the item to be offered for sale is presently being sold by some other entity under contract with the University and/or if the sale will adversely affect what is already being sold under contract.

## **Grading**

### *Grading System and Quality Points*

Cumulative grade point averages are computed on a quality point system. The interpretation of the letter grades and their quality point values is as follows:

Grade	Quality Points Per Credit Hour
-------	--------------------------------

A Excellent	4.0
B+ Good	3.5
B Good	3.0
C+ Average	2.5
C Average	2.0
F Failure	0.0

IC Incomplete 0.0  
AU Audit 0.0  
W Withdrawal 0.0  
Z Grade Not Reported 0.0  
S Satisfactory 0.0  
U Unsatisfactory 0.0

Hours earned with a Satisfactory grade will be added to the total required for graduation, but will not affect the grade point average; an Unsatisfactory grade will not carry hours earned and will carry no penalty to the grade point average. The grade of Incomplete (IC) may be assigned when students have not completed all required coursework and/or examinations for completion of a course. The IC should be removed no later than one year after it was assigned. If it is not removed within the stated time, the IC will automatically change to the grade of F. In cases of illnesses or extreme circumstances the IC will be changed to the grade of W with the approval of the Dean.

A student's scholastic standing is normally determined by calculating a grade point average (GPA). This average, which is calculated for each semester and for the entire period of residence, is determined as follows: the total number of hours for which a grade is received is multiplied by the numerical equivalent for that grade. The results are added, and the sum is divided by the total number of hours for which grades have been assigned. Should a course be repeated, all grades received in that course are used in the computation of the grade point average.

## **Graduation**

### *Application for Graduation*

All students must apply for graduation. It is the student's responsibility to be aware of all departmental, college, and university degree requirements as published in the catalog, and to ensure that such requirements have been met or that appropriate waivers have been secured and filed in the Registrar's Office. The application for graduation must be filed with the Registrar's Office one term prior to the expected date of graduation.

### *Awarding of Degrees*

The College awards degrees at the end of the semester in which all degree requirements have been met. These requirements are outlined in each program of study's individual policy sections in this Handbook.

### *Graduation Exercises*

A commencement ceremony is held annually at the end of the spring semester. Only students who have met all degree requirements are eligible to participate.

### *Academic Regalia*

The cap (mortar board) and gown-with or without an academic hood-are the formal academic attire for ceremonial events at Mercer University, including commencements. A medallion signifies membership in the national Honor Society of Phi Kappa Phi. Traditional hoods of academic regalia are bestowed upon the Doctor of Physical Therapy, Doctor of Psychology, Master of Medical Science (Physician Assistant), Master of Public Health, Doctor of Public Health, and the Master of Athletic Training graduates at a special hooding ceremony held prior to commencement. The Doctor of

Physical Therapy hood is lined with the Mercer University colors of orange and black and is trimmed in teal. The Doctor of Psychology hood is lined with the Mercer University colors of orange and black and is trimmed in gold. The Master of Medical Science (Physician Assistant) hood is lined with the Mercer University colors of orange and black and is trimmed in homa green. The Master of Public Health hood is lined with the Mercer University colors of orange and black and is trimmed in salmon. The Doctor of Public Health hood is lined with the Mercer University colors of orange and black and is trimmed in salmon. The Master of Athletic Training hood is lined with the Mercer University colors of orange and black and is trimmed in sage green.

## **Grievance Policies and Procedures**

Students have the right to bring grievances against a faculty member or an administrator and to appeal decisions concerning academic matters. A “grievance” is typically a complaint relating to some allegedly improper action or behavior. An “appeal” is typically a request for review of a routine judgment or decision. Such matters may include but are not limited to failure to abide by requirements described in the course syllabus and arbitrary awarding of grades.

For more information about Mercer’s Grievance Policies and Procedures, please refer to the Mercer University Student Handbook available online at:

<http://provost.mercer.edu/handbooks/studenthandbook.cfm>

## **Health and Welfare of Students, Mental and Physical**

Mercer University recognizes that the challenges and stresses associated with attending college can be overwhelming at times. In order to provide confidential counseling, support, and guidance to students who seek assistance, Mercer University maintains counseling services on the Macon and Atlanta Campuses (both provide services to Regional Academic Center Students). However, when it is determined that a serious threat of harm exists for a student, either to themselves or to others, the University is obligated to take proactive action to address this threat.

For more information about the Health and Welfare of Students, please refer to the Mercer University Student Handbook available online at: <http://provost.mercer.edu/handbooks/studenthandbook.cfm>

## **Health Insurance**

University policy mandates that all students enrolled in 3 or more hours (except those in regional academic centers) must maintain health insurance coverage. All International students must carry active health insurance regardless of hours enrolled or campus attended. Students are automatically charged by the University for health insurance when they register for classes. This charge can be removed by completing the online waiver form before the end of the waiver period. To complete the waiver process, go to <https://studentplan.corehealthbenefits.com/>. Students must complete the waiver before the stated deadline. Failure to complete this form before the deadline will result in insurance being purchased for you and charged to your account.

## **Immunization Policy**

The Mercer University immunization form is required. It must be completed and signed by the student and then uploaded to Campus Health along with an official copy of the student's immunization (vaccine) record through the MyMercer portal. Detailed instructions may be found at the following link: <https://campushealth.mercer.edu/immunization-and-health-forms/>.

For more information about the Immunization Policy, please refer to the Mercer University Student Handbook available online at: <http://provost.mercer.edu/handbooks/studenthandbook.cfm>

## **Inclement Weather**

In the event of hazardous weather, the following policy will be in effect:

1. A decision as to whether or not school will be open or closed on the days in question will be made and announced. When official closings are announced, complete information for faculty, staff and students will be recorded on the Mercer Weather Hotline, which is 678.547.6111 in Atlanta and 478-301-5335 in Macon. Information about Mercer closings will also be aired on Atlanta area radio and television stations. The official stations are WSB Radio (AM 750) and WSBTV Channel 2. Students can also check the website ([www.mercer.edu](http://www.mercer.edu)) for information.
2. If a student feels that conditions are so hazardous that coming to school would pose a danger, he/she is automatically excused from classes even if school should be open. In the event that a student should miss an exam, the professor in charge will give a make-up exam at the officially scheduled time for make-up exams.
3. If necessary, cancelled classes will be made up on an appropriate Saturday.

## **Information Technology Policy**

The Mercer University Information Technology Policy (the "Policy") contains Mercer's philosophy and requirements governing use of its information technology resources by students, faculty, staff, and others who have been given authorization, either explicitly or implicitly, to access those resources. Mercer University expects each member of the community to use Mercer's information technology resources, including connections to resources external to Mercer that are made possible by Mercer University's information technology resources, responsibly, ethically, and in compliance with the Policy, relevant laws, and all contractual obligations to third parties. The use of Mercer University's information technology resources is a privilege. If a member of the Mercer community fails to comply with this Policy or relevant laws and contractual obligations, that member's privilege to access and use Mercer information technology resources may be revoked. The use of Mercer University's information technology resources to send communications to Mercer or non-Mercer persons or entities typically identifies the sender as belonging to the Mercer University community. Each member of the community should, therefore, recognize that any such communication might reflect on how Mercer University is perceived by the Mercer community and the public at large.

For more information about Mercer's Information Technology Policy, please refer to the Mercer University Student Handbook available online at:

<http://provost.mercer.edu/handbooks/studenthandbook.cfm> or  
[http://it.mercer.edu/student/internet\\_network/it\\_access\\_and\\_use\\_policy.htm](http://it.mercer.edu/student/internet_network/it_access_and_use_policy.htm)

## **Intellectual Property**

Mercer University is dedicated to reaching, research, and the expansion of knowledge. Although the University does not undertake research or developmental work principally for the purpose of developing patents and commercial applications, patentable inventions sometimes result from the research activities carried out wholly or in part with the University funds and facilities. It is the policy of the University to assure the utilization of such inventions for the common good and, where appropriate, to pursue patents and licenses to encourage their development and marketing.

For more information about Intellectual Property, including but not limited to, ownership of inventions, division of income, invention management, and copyright policy, please refer to the Mercer University Student Handbook available online at:

<http://provost.mercer.edu/handbooks/studenthandbook.cfm>

## **International Students Policy**

The Office of International Programs is an academic support unit of the University. Its mission is to advance educational opportunities that inspire purposeful learning and engage Mercerians in communities worldwide. For more information about the International Student Policy, including but not limited to, study abroad, international students and scholar services, and the English Language Institute, please refer to the following page: <https://international.mercer.edu>.

## **Minors Policy**

Mercer provides a variety of programs for minor children (defined as any individual under the age of 18), such as summer campus, after-school programs, and enrichment activities. The University recognizes it has a special duty of care and supervision when working with minors and is committed to providing a safe environment for all who participate in these programs. For more information about the minors policy, please refer to the full policy online, which can be found at

<https://policies.mercer.edu> under the General Policies heading, as well as to the Mercer University Student Handbook available online at: <http://provost.mercer.edu/handbooks/studenthandbook.cfm>

## **Missing Student Policy**

If a member of the University community (faculty, staff, student, parent, alumni) has reason to believe that a student is missing, that community member will refer the case immediately to the Mercer Police Department. For regional academic center students, the community member may contact Mercer Police directly or the Center Coordinator who, in turn, must report the missing student to Mercer Police and the Regional Academic Center Director of Operations.

For more information about Mercer's Missing Student Policy, please refer to the Mercer University Student Handbook available online at: <http://provost.mercer.edu/handbooks/studenthandbook.cfm>

## **Motorized Vehicle Policy**

Registered cars, trucks, and motorcycles are permitted on campus on authorized and designated university roads and parking lots only and must be operated in accordance with state and federal laws and Mercer Police guidelines. Similarly, authorized golf carts, maintenance equipment, and recognized mobility devices for individuals with a disability, are permitted on university property. Visitor vehicles must operate in accordance with Mercer police guidelines and are restricted to visitor parking. The Mercer Police parking information and regulations are located online at [police.mercer.edu/parking](http://police.mercer.edu/parking).

For more information about Mercer's Motorized Vehicle Policy, please refer to the Mercer University Student Handbook available online at: <http://provost.mercer.edu/handbooks/studenthandbook.cfm>

## **Name Badges**

Name badges will be provided for students at the beginning of the first year. These name badges must be worn at all experiential learning sites and occasionally for on campus programs (for example, admissions interviews). Additional or replacement name badges can be ordered as necessary by the program.

## **Official Contact Information**

Address changes must be submitted, in writing, to the Office of the Registrar. Please note that address changes submitted to program offices are not automatically transmitted to the Registrar.

## **Parking and Traffic Regulations**

### *Registration and Decals*

The Mercer Police are responsible for parking enforcement at Mercer University. All vehicles on the Macon and Atlanta campuses as well as Regional Academic Centers must be registered each year and each vehicle must display a parking decal (provided at no cost). Vehicles can be registered 24 hours a day, 7 days a week at Mercer Police. The tag number is necessary to obtain a decal. If the vehicle or the tag number changes, notify Mercer Police the next business day. All decals must be placed on the lower front windshield on the driver's side.

### *Handicapped Parking*

Mercer does not issue handicapped access parking decals. Permanently or temporarily disabled persons who require handicap access must see their doctor about getting a permit issued by the State of Georgia. Application forms are available with the Mercer Police station. Only a law enforcement officer can authorize a handicap access space without a decal. Vehicles must be registered with Mercer Police even if the driver possesses a handicapped permit.

### *Parking*

Possession of a decal does not guarantee you a parking space. The responsibility for locating a proper space rests with the driver, not the University. The lack of a parking space, being late for class or work, parking illegally for a short time, leaving your flashers on, are not valid excuses for parking illegally. The absence of a sign prohibiting parking does not mean you can park illegally.

More information on the parking system, tickets, and appeals is available from the departmental web site at <http://police.mercer.edu/parking>. Special parking brochures are available at Mercer Police.

## **Posting of Materials**

Posting of signs, fliers, bulletins, announcements, etc. upon doors, walls, and windows is prohibited to prevent damage to campus physical facilities.

The Physical Therapy Program, Physician Assistant Program, Clinical Psychology Program, Public Health Program, and Athletic Training Program detail policies and procedures (please refer to the program specific Student Handbook for greater details regarding Posting of Materials).

Special notices and other information of interest may be posted only on “Public Notice” bulletin boards, located in various areas on campus.

## **Program Specific Handbooks**

Each Program (Physical Therapy, Physician Assistant, Clinical Psychology, Public Health, and Athletic Training) details policies and procedures as an informational guideline for current students. Note: The Mercer University Student Handbook supersedes all College and Program Student Handbooks.

## **Registration**

All students are required to register at the times prescribed in the Academic Calendar. Official enrollment, which includes the completion of satisfactory financial payments, is required for admission to any class or clinical experience. Students who register after the prescribed time are subject to a late registration fee.

**IMPORTANT NOTE:** To cancel a registration at any point after the Registrar’s Office has entered course selections in the computer, a student must complete a Course Withdrawal Form. If the appropriate official form is not completed and the student does not attend class, a grade of F will be assigned.

### *Course Load*

Physical Therapy, Clinical Psychology, Athletic Training, and Physician Assistant students are expected to carry the full-time course load each semester as defined in each program of study’s individual policy section. Public Health students carry part-time or full-time course loads.

### *Course Changes*

Course changes (dropping and/or adding courses) must be done on or before dates specified in the calendar of the current catalog. For students enrolled in the College of Health Professions, courses may be dropped or added only during the first week of the semester. To change courses during this period, a student must use the *MyMercer* online system. Courses dropped during this time will not appear on the student’s grade report or permanent record.

## **Religious Observance Policy**

Mercer University is respectful of the religious practices of members of the student body. Students who will be absent from class for religious observances must confer with their instructor(s) regarding the date of the absence at the beginning of each semester or session, or at least two (2)

weeks prior to the dates of absence. The disposition of missed assignments will be arranged between instructor and student. If a mutually satisfactory solution is not reached, the right to establish a reasonable alternative is reserved by the instructor. Students who feel that their academic performance will be compromised by the alternative assignment/examination timetable may ask that the instructor's Program Director review the instructor's decision.

## **Resignation from the University**

Physical Therapy, Clinical Psychology, Physician Assistant, Public Health, and Athletic Training students must withdraw from all courses in order to resign officially from the University. A grade of W is assigned for the courses in which the student was enrolled before withdrawal, if the withdrawal takes place within the time limit prescribed in each semester of the academic calendar. Without official resignation, a student leaving the University forfeits refunds and the grade of F is assigned to all courses taken in the semester. Withdrawal from all courses for which a student is registered constitutes resignation from the University.

A Physician Assistant student who is not attending classes at the time of withdrawal is required to meet with the Physician Assistant Program Director to officially resign from the University.

## **Rights of Students**

Community of Respect ensures certain rights of its members. The University values the following student rights:

- A) Free inquiry, expression, and assembly as long as conducted in a manner that does not infringe upon the rights of others.
- B) Freedom from unreasonable invasion of the privacy of the individual's person, residence, papers, personal effects, and University records.
- C) Right to due process and equal protection under the University's judicial system.
- D) Freedom to pursue education goals; the right to free exchange of ideas, thoughts, and viewpoints.
- E) Freedom of association for students who meet the University's standards for participation in co-curricular and extracurricular activities.

For more information about the Community of Respect, Student Rights, the Campus Code of Conduct and the Campus Judicial Process, please refer to the Mercer University Student Handbook available online at:

<http://provost.mercer.edu/handbooks/studenthandbook.cfm>.

## **Rights Pertaining to Educational Records**

The Family Educational Rights and Privacy Act (FERPA) affords students at Mercer University certain rights with respect to their educational records. For a comprehensive list of rights, please refer to the Mercer University Student Handbook available online at:

<http://provost.mercer.edu/handbooks/studenthandbook.cfm>.



## **Service Animals and Emotional Support Animals**

Mercer University is committed to maintaining a fair and respectful environment for living, working, and studying for all, including individuals with disabilities. To that end and in compliance with federal and state laws, the University has developed guidelines regarding Service Animals and Emotional Support Animals while on Mercer property. Policies and procedures related to Service Animals and Emotional Support Animals can be viewed in its entirety at <https://policies.mercer.edu> under the General Policies heading.

## **Sexual Misconduct and Discrimination**

Mercer University is committed to maintaining a respectful environment for living, work, and study. To that end, and in accordance with federal, state, and local law and University policies, the University prohibits harassment of or discrimination against any person because of race, color, national or ethnic origin, disability, marital status, veteran status, sex (including pregnancy, childbirth, or a medical condition related to pregnancy or childbirth), sexual orientation, gender identity, gender expression, genetic information, age, or religion (except in limited circumstances where religious preference is permitted by law), or any other protected status or characteristic as defined by law. Mercer University is also committed to providing an educational and workplace environment free from all forms of sexual misconduct, including sexual harassment, sexual assault, dating or domestic violence, gender discrimination or harassment, sexual exploitation, stalking, or retaliation.

To uphold the University's values of fostering a climate of opportunity, mutual respect, and understanding and striving for a campus that is absent of discrimination and sexual misconduct, the Office of Equity and Compliance will address and remediate reported forms of discrimination and sexual misconduct and provide policies, training, and education in an effort to prevent discrimination and sexual misconduct. You may contact the Associate Vice President of Equity and Compliance/Title IX Coordinator at 478-301-2788 or at [stellato\\_sl@mercer.edu](mailto:stellato_sl@mercer.edu) or learn more by visiting <https://equityandcompliance.mercer.edu/>. All Mercer University employees are required to disclose information about suspected or alleged sexual misconduct or discrimination to the Title IX Coordinator. If the Office of Equity and Compliance receives information about an incident of sexual misconduct or discrimination, they will reach out to provide information on your options, rights, and supportive measures that are available to you as a member of the Mercer University community.

## **Social Media and Social Networking**

Online blogs, public mailing lists and social network sites and applications including but not limited to Facebook, Twitter, Instagram, Snapchat, Pinterest, LinkedIn (hereafter collectively referred to as social media) are increasingly popular tools for professional communication and social interaction. Mercer University College of Health Professions recognizes social media as excellent opportunities for students, faculty, and staff to interact both personally and professionally with the latter known as e-Professionalism. While these sites have become a great means of communicating, as healthcare professionals, College of Health Professions students have the responsibility of being fully aware that use of social media is a potential forum for lapses in professional and ethical conduct.

Online social network sites are not a place where someone can say and do whatever they want without repercussions. Internet postings may be traceable forever.

It is the responsibility of each College of Health Professions students, faculty, and staff to understand that posting certain information is not only unprofessional and/or unethical, but can also be illegal. Public postings on social media may have legal ramifications if comments are made by students concerning patients or if students portray themselves, other students, faculty, staff, clinical instructors, or other colleagues in an unprofessional manner. Postings can be used by the courts or professional licensing boards in the process of decision making. Students, faculty, and staff must be aware that violation of existing statutes and administrative regulations may expose the offender to criminal and/or civil liability, and punishment for violations may include fines and imprisonment. Students, faculty, and staff must also be aware that offenders may be subject to adverse actions including, but not limited to, a Code of Professional Conduct violation, removal from a clinical/experiential site, and failure of a course.

The College of Health Professions does not actively monitor online activities of the student body; however, unprofessional issues could be, and have been, brought to the attention of the Office of Student Affairs and Admissions, Office of the Dean, or Department Chair, through a variety of mechanisms. The College of Health Professions student must understand that by identifying themselves publically using social media, they are creating perceptions about College of Health Professions, a clinical/experiential site, and their chosen health profession, and thereby must assure that all content is consistent with the values and professional standards of Mercer University, the College of Health Professions, and their profession.

The following actions are strictly forbidden:

- Reporting personal health information of other individuals. Removal of an individual's name does not constitute proper-de-identification of protected health information. Inclusion of data such as age, gender, race, diagnosis, date of evaluation, photographs, or type of treatment may still allow the reader to recognize the identity of a specific individual.
- Reporting private (protected) academic information of another student or trainee. Such information might include, but is not limited to: course grades, narrative evaluations, examination scores, or adverse academic actions.
- Representing one's self inappropriately or as another person.
- Utilizing websites and/or applications in a manner that interferes with learning while on a clinical/ experiential site.
- Posting any information that could identify a clinical/experiential site, a preceptor, or a patient at a site.
- Knowingly distribute false evidence, statements or charges against another student, faculty, staff, preceptor, or a clinical/experiential site of College of Health Professions.
- Using social media as a means of communicating inappropriate, uncivil or insulting comments or threats of violence regarding peers, faculty, staff, preceptors, or a clinical/experiential site of College of Health Professions.

Social Media Guidelines of Mercer University are accessible at <http://socialmedia.mercer.edu/>

## **Solicitation and Distribution of Literature**

Students may not solicit business of any type, including the selling of products or services, without having been invited or given permission by an official of the University. Students may distribute literature by posting on approved bulletin boards and kiosks. Distribution that includes placing literature/ product samples on cars or in University mailboxes is strictly prohibited.

Any unauthorized persons soliciting or distributing on campus are to be immediately reported to Mercer Police.

## **Student Progress Deviation Policy**

A student who deviates from the expected didactic or clinical progression in any program in the College of Health Professions is personally responsible to contact the Mercer University Bursar, Registrar, and Financial Aid offices to ensure that all administrative and financial obligations are addressed. The student is obligated to follow all of the department's/program's policies for continuation in the program, if that option exists.

The student will contact the Mercer University Bursar, Registrar, and Financial Aid offices and attend to all administrative and financial obligations within ten business days of awareness of the situation. Failure on the part of the student to follow the stated procedures may result in discontinuation of their enrollment in the program. The department chair/program director will inform the dean's office about student progression deviations immediately upon occurrence.

## **Tobacco and Smoke-Free Environment Policy**

Mercer University is committed to the health and well-being of the members of its student body, faculty, and staff. The University not only has a vested interest in the vitality of its students and those who administer and operate the University's programs of education, research, and service, but also wishes to promote the advancement of health in general and the maintenance of a healthful environment. The University and its Medical, Nursing, Pharmacy, and Health Professions schools, moreover, have substantial commitments to health-related research and teaching. View the full Tobacco and Smoke-Free Environment policy at <https://hr.mercer.edu/policies/upload/Tobacco-FreePolicy.pdf>.

## **Travel Policy and Procedures**

The College supports student engagement in professional development and dissemination of original research findings. Policies on financial support to participate in state, regional, national, or international conferences are provided in each program's student handbook.

In all cases, students are required to receive travel preauthorization from their program/department, following the specified guidelines, at least 30 days prior to travel for it to be considered for an excused absence. Students traveling to a professional meeting/conference for the purpose of presenting research (poster or platform) may be eligible for partial reimbursement of expenses incurred through funds made available by the Office of the Provost. Guidelines are available

at <https://provost.mercer.edu/resources/university-student-travel/>. Students are required to follow procedures published by the College and University in order to be eligible for these funds.

## **Voter Registration Requirements of the Higher Education Amendments**

Mercer provides each enrolled student the opportunity to apply to register to vote or to update his or her voter registration records at least once a year. Voter registration information is available at <https://vote.mercer.edu/>.

For more information about Voter Registration Requirements, please refer to the Mercer University Student Handbook available online at: <http://provost.mercer.edu/handbooks/studenthandbook.cfm>.

## **Withdrawals, Administrative or Medical**

The mental and physical welfare of a student can have a significant impact on his or her academic and developmental success in college. Mercer University provides qualified medical and mental health services for students through Mercer Campus Health and counseling services on the Macon and Atlanta main campuses. Under normal circumstances, students may withdraw from classes through the eleventh week of fall or spring semester; course withdrawals are not permissible after this deadline. However, medical or psychological situations may arise that jeopardize a student's ability to continue enrollment at the University. In such instances the student may request to be administratively withdrawn from the University. For more information about Withdrawals, Administrative or Medical, please refer to the Mercer University Student Handbook available online at: <http://provost.mercer.edu/handbooks/studenthandbook.cfm>.

## **Student Services-Atlanta**

### **Auxiliary Services/Bear Card**

678.547.6144

[auxiliary.mercer.edu](http://auxiliary.mercer.edu)

2960 Flowers Road, Bldg 2000, Suite 2400

Monday-Thursday, 9:00 a.m. to 1:00 p.m.; 2:00 p.m. to 6:00 p.m.; Friday, 9:00 a.m. to 1:30 p.m.

Auxiliary Services is responsible for many different functions on campus including: the Bear Card (the campus identification card and debit card program), Mercer Food Services-Meal Memberships, Campus Vending Services, Mercer Copy Center/Postal Services, Mercer Laundry Services (washers and dryers for University housing), Mercer Alarm Services, and the Mercer Bookstore.

### **Bookstore**

678.547.6350

<https://merc-macon.bncollege.com/shop/merc-atlanta/home>

2960 Flowers Road, Bldg 2000, Suite 2300

Monday-Thursday, 9:00 a.m. to 6:00 p.m.; Friday, 9:00 a.m. to 3:00 p.m.; Closed Saturday & Sunday

The Atlanta Campus Bookstore serves the campus community with all educational needs. Considered the first choice to purchase, rent or reserve textbooks, school supplies, and spirit merchandise.

**Bursar's Office**

678.547.6121

[bursar.mercer.edu](http://bursar.mercer.edu)

Jessica Ellison, University Bursar (Ellison\_jk@mercerc.edu)

2960 Flowers Road, Bldg 2000, Suite 2250

Monday-Wednesday, 8:30 a.m. to 4:30 p.m.; Thursday, 8:30 a.m. to 1:00 p.m., Friday, 8:30 a.m. to 4:30 p.m.

The Bursar's Office, under the direction of the University Bursar, serves as both business office and payment office for students. This office is responsible for student billing, fee payment, refunds and the collection of various forms of University revenue.

**Campus Life – Division of Student Affairs**

678.547.6824 Fax 678.547.6373

[campuslife.mercer.edu/atlanta](http://campuslife.mercer.edu/atlanta)

Cindy Strowbridge, Assistant Dean for Campus Life (Strowbridge\_cl@mercerc.edu)

Tangela Mitchell, Coordinator of Student Affairs Services (homas\_ty@mercerc.edu)

208 Sheffield Center

Monday-Friday, 9:00 a.m. to 5:00 p.m.

The Campus Life Office encompasses a variety of student services:

Disability Services-if you have a documented physical, psychological or learning disability and require accommodations each academic session, in advance of or by the close of the first class meeting or as soon thereafter as possible.

Housing-On campus apartments house 184 students in three buildings. Apartments come in one, two, and four-bedroom units. Each individual has separate telephone, internet (including wireless) and basic cable hook-up. These services along with all utilities are included in your rent. Apartments are furnished and include a fully appointed kitchen. The apartments are located directly across the street from the Sheffield Student Center housing a comprehensive wellness program, gym and pool. *Please call for rental rates and to plan a tour.*

Housing Judicial Affairs-Rules and Regulations for living on campus are outlined in the Residential Handbook. This document is updated every year. Residential students are responsible for reviewing the content and following the code of conduct as outlined.

Campus Activities-Help plan activities of interest to you and your peers. We bring together students, faculty and staff from across campus in activities that are fun for everyone! Remember ... there is life outside the classroom. To get involved or to share a program idea, contact the Campus Life office at 678.547.6814.

**Center for Career and Professional Development**

678.547.6023

<https://career.mercer.edu>

Kim Meredith, Executive Director (homas\_kc@mercer.edu)

Services provided by the Center for Career and Professional Development (CCPD) are available to all Mercer students and alumni. Services provided on an individual basis include career exploration; assessments; resume, CV, and cover letter assistance; interview preparation and mock interviews; job search preparation and resources; career transitioning; and salary negotiation skills.

Internship opportunities and career resources are available online at <http://career.mercer.edu/internship>. Career opportunities are available through various resources including online databases, career fairs and networking events. All students are encouraged to participate in annual Career Day events.

### **Counseling and Psychological Services**

678.547.6060

<https://counseling.mercer.edu/atlanta/>

Bates Canon, LPC, CPCS, Director, Student Health and Counseling (canon\_ab@mercer.edu)  
215 Sheffield Center

Counseling is available to currently enrolled Mercer students at no charge. Call 678.547.6060 for Atlanta Campus, or Macon Campus 478.301.2862 for information and appointments. If you are seeking counseling outside of office hours, please call the Georgia Crisis & Access Line at 1.800.715.4225. Some examples of the kinds of issues students may discuss with a counselor include: managing relationships, handling family problems, coping with stress and anxiety, grief and loss, decreasing depressed feelings, vocational/career issues, improving communication, study skills, time management, decision-making skills, and personal awareness and growth.

### **Food Service / Cafeteria / Catering**

404.872.4231 office; 404.285.6164 mobile

[www.carlylescatering.com](http://www.carlylescatering.com)

Shellie Nobis, Catering Coordinator

Pharmacy Administration/Cafeteria Building

Catering by Request

Facilities: Mercer Atlanta Cafeteria (MAC)

Monday-Friday 8:00 a.m. to 1:30 p.m.

Carlyle's Corporate food service currently operates in the Cafeteria building and provides catering for events on and off campus. Please call for the latest catering menus or go to our website at: [www.carlylescatering.com](http://www.carlylescatering.com). We look forward to serving you!

Carlyle's, the campus food service provider, has exclusive rights to provide catering to campus. In addition, the campus food service provider has exclusive rights to provide food by operating the retail dining, "The MAC," Douglas Regional Academic Center, and AACC Food Carts. Outside food service providers are not allowed to provide food for events on campus unless an exception is approved by the Senior Vice President's Office (Atlanta), or the Associate Vice President of Auxiliary Services (Macon).

**Mercer Police**

678.547.6358 ~ Emergency Number: 678.547.6911  
Major Charles Platt, Associate Director (plat\_cr@mercer.edu)  
Pharmacy Administration/Cafeteria Building, Lower Level

**Office of Global Engagement**

678.547.6151  
Brenda Austrie-Cannaday, Director of Global Pathways (austrie-cannaday\_b@mercer.edu)  
Admin and Cafeteria Building, suite #121  
Monday-Friday, 8:30 a.m. to 5:00 p.m.: Please call for an appointment.

**Registrar's Office**

678.547.6263  
[registraratlanta@mercer.edu](mailto:registraratlanta@mercer.edu)  
Diana Hill, Registrar (hill\_d@mercer.edu)  
2960 Flowers Rd, Bldg 2000, Suite 2200  
Monday-Thursday, 9:00 a.m. to 5:00 p.m.; Friday, 9:00 a.m. to 4:30 p.m.

The Registrar's Office provides many services to students, faculty and staff of the University, including publication of the schedule of classes and University catalogs, coordination of the registration process, recording of semester grades, facilitation of degree audits and coordination of graduation. The Registrar's Office also assists students with transcript requests, enrollment verifications (via the National Student Clearinghouse), name and address changes, transient and cross registration requests, and the evaluation of transfer credit. Requests for Mercer transcripts are free, but must be in writing and signed by the student as required by the Family Educational Privacy Act of 1974.

**Student Financial Planning**

678.547.6444  
[financialaid.mercer.edu/atlanta-campus/](http://financialaid.mercer.edu/atlanta-campus/)  
2960 Flowers Rd, Bldg 2000, Suite 2100

Monday-Thursday, 8:30 a.m. to 5:00 p.m.; Friday, 8:30 a.m. to 4:30 p.m.  
Extended office hours available by appointment.

Mercer University's Office of Student Financial Planning is available to provide information and assistance to students who need financial aid in order to attend the University. Financial aid may include a combination of loans, scholarships, grants, and part-time employment. It is important that students apply for financial assistance as early as possible so that forms may be processed and the financial need of each applicant determined. All necessary forms and applications can be obtained from the Office of Student Financial Planning or at Mercer's website. Students may speak with a financial aid advisor during office hours with no appointment necessary. Students who would like to make appointments may do so by calling 678.547.6444. Additional information is available online at <http://financialaid.mercer.edu>.

### **Student Health Centers**

678.547.6130

Fax: 678.547.6054

<https://shc.mercer.edu/>

206 Sheffield Center

Hours of Operation: Monday-Friday, 8:00 a.m. to 4:00 p.m.

Student Health is designed to provide limited health care and treatments for enrolled students who are actively attending classes at the university. Services include, but are not limited to, treatment of minor illnesses, accidents, providing medication as indicated, lab tests, immunizations, TB skin tests, and issuing referrals as requested.

### **Swilley Library**

678.547.6282

<http://libraries.mercer.edu>

Dr. Jeffrey Waldrop, Vice Provost for University Libraries

Research Services: 678.547.6282

Circulation Desk: 678.547.6284

Please check website for hours.

One of four full service libraries within the University, the Monroe F. Swilley, Jr. Library serves as the library for Mercer's Atlanta campus.

### **Technology Support Services**

678.547.6310 or 478-301-7000

<http://it.mercer.edu/>

Ken Donnelly, Director – Audio Visual Services

108 Swilley Library Building, Suite 144K

Monday-Friday, 8:00 a.m. to 5:00 p.m.

Contact the IT Help Desk if you need technology support: [helpdesk@mercer.edu](mailto:helpdesk@mercer.edu); 678.547.6310.

## **Student Services-Macon**

### **Auxiliary Services/Bear Card**

478.301.2741

[auxiliary.mercer.edu/bear-card](http://auxiliary.mercer.edu/bear-card)

Auxiliary Services Building/Technology Support Services Building

Monday-Friday, 9:00 a.m. to 12:00 p.m. and 1:00 p.m. to 5:00 p.m.

Auxiliary Services is responsible for many different functions on campus including: the Bear Card (the campus identification card and debit card program), Mercer Food Services-Meal Memberships, Campus Vending Services, Mercer Copy Center/Postal Services, Mercer Laundry Services (washers and dryers for University housing), Mercer Alarm Services, and the Mercer Bookstore.



**Bookstore**

478.301.2945

<http://mercer-macon.bncollege.com/>

1602 Montpelier Avenue, Suite 100, Macon, GA, 31207

Monday-Thursday, 9:00 a.m. to 6:00 p.m.; Friday, 9:00 a.m. to 5:00 p.m.

The Macon Campus Bookstore serves the campus community with all educational needs. Considered the first choice to purchase or rent textbooks, school supplies, and spirit merchandise; the bookstore also provides services such as UPS shipping, document faxing, and book reservations.

**Campus Life**

478.301.2868 Fax 478.301.4201

campuslife@mercer.edu

<http://campuslife.mercer.edu/macon/>

Dr. Douglas R. Pearson, Vice President for Student Affairs and Dean of Students

(pearson\_dr@mercer.edu)

The Office of Campus Life and Student Involvement strives to enhance student life by promoting involvement and leadership in the Mercer and Macon communities. This mission is accomplished by providing educational, social, and cultural campus-wide programming through Mercer's student activities board, Quadworks, and by providing direct advisement for the governing bodies of Mercer's twenty chapters of (inter)national Greek-letter organizations.

**Center for Career and Professional Development**

478.301.2863

Stephen Brown, Director (brown\_sr@mercer.edu)

3<sup>rd</sup> Floor of the Connell Student Center above the cafeteria

Monday-Friday, 8:30 a.m. to 5:00 p.m.

Services provided by the Center for Career and Professional Development (CCPD) are available to all Mercer students and alumni. Services provided on an individual basis include career exploration; assessments; resume, CV, and cover letter assistance; interview preparation and mock interviews; job search preparation and resources; career transitioning; and salary negotiation skills.

Internship opportunities and career resources are available online at <http://career.mercer.edu>.

Career opportunities are available through various resources including online databases, career fairs and networking events. All students are encouraged to participate in annual Career Day events.

**Counseling and Psychological Services**

478.301.2862

<https://counseling.mercer.edu/macon/>

Emily Piassick, PhD, Director and Psychological Services (piassick\_ea@mercer.edu)

Counseling is available to currently enrolled Mercer students at no charge. Call 678.547.6060 for

Atlanta Campus, or Macon Campus 478.301.2862 for information and appointments. If you are seeking counseling outside of office hours, please call the Georgia Crisis & Access Line at 1.800.715.4225. Some examples of the kinds of issues students may discuss with a counselor include: managing relationships, handling family problems, coping with stress and anxiety, grief and loss, decreasing depressed feelings, vocational/career issues, improving communication, study skills, time management, decision-making skills, and personal awareness and growth.

### **Food Service/Cafeteria/Catering**

478.301.2927

Aramark Catering

[catering@mercer.edu](mailto:catering@mercer.edu)

Ed Robertson-James, Catering Director ([homasn-james@aramark.com](mailto:homasn-james@aramark.com))

1501 Mercer University Dr.

Macon, GA 31210

Catering by Request

### **Mercer Police**

478.301.4357 ~ Emergency Number: 478.301.2911

Chief Gary Collins, Director of Mercer Police ([collins\\_g@mercer.edu](mailto:collins_g@mercer.edu))

1765 Winship Drive

Macon, GA 31207

The Mercer Police is staffed with professionally trained police officers (P.O.S.T. certified) and qualified dispatchers 24 hours daily. In addition to conducting routine mobile and foot patrols for your safety and convenience, the Police Department offers escorts to your car, jump-starts and access to cars with keys locked inside. The Police Department completes reports of all criminal, accident and miscellaneous incidents that occur on Mercer University property.

Parking decals can be obtained at the Police Department. All students/faculty/staff members must register their vehicle(s) with the Police Department and place their decals on their vehicle(s). Residential students can pick up their decal through the Campus Life office. There is no charge for the parking decal. Decals enable you to park anywhere on campus except for visitor, handicap (unless you have a handicap decal), cycle and restricted parking areas. Parking at the on-campus apartments is restricted to residential students.

### **Office of Global Engagement**

Felix Jelen, Assistant Vice President of Global Engagement ([Jelen\\_f@mercer.edu](mailto:Jelen_f@mercer.edu))

Mercer University

1501 Mercer University Dr.

Macon GA 31207

478.301.2650

The International Programs Office initiates, processes, and issues documents necessary for international students to enter, transfer, and continue their studies at Mercer University. This office

is staffed with an immigration specialist who is knowledgeable in the up-to-date laws and regulations that affect the international student.

International students who have questions or concerns are welcome to visit the International Programs Office anytime during their educational career at Mercer University. This office works closely with all departments of the University to ensure that international students' needs are met and that they are compliant with immigration requirements.

### **Registrar's Office**

478.301.2494

[registrar@mercer.edu](mailto:registrar@mercer.edu)

<https://registrar.mercer.edu/macon/>

Alba Rodriguez, University Registrar

[rodriguez\\_a@mercer.edu](mailto:rodriguez_a@mercer.edu)

1501 Mercer University Dr. Macon GA 31207

Monday-Friday, 8:30 a.m. to 5:00 p.m.

The Registrar's Office provides many services to students, faculty and staff of the University, including publication of the schedule of classes and University catalogs, coordination of the registration process, recording of semester grades, facilitation of degree audits and coordination of graduation. The Registrar's Office also assists students with transcript requests, enrollment verifications (via the National Student Clearinghouse), name and address changes, transient and cross registration requests, and the evaluation of transfer credit. Requests for Mercer transcripts are free, but must be in writing and signed by the student as required by the Family Educational Privacy Act of 1974.

### **Student Financial Planning**

478.301.2670

<https://financialaid.mercer.edu/>

1501 Mercer University Drive, Macon, GA 31207

Monday-Thursday, 8:30 a.m. to 5:00 p.m.; Friday, 8:30 a.m. to 4:30 p.m.

Extended office hours available by appointment.

Mercer University's Office of Student Financial Planning is available to provide information and assistance to students who need financial aid in order to attend the University. Financial aid may include a combination of loans, scholarships, grants, and part-time employment. It is important that students apply for financial assistance as early as possible so that forms may be processed and the financial need of each applicant determined. All necessary forms and applications can be obtained from the Office of Student Financial Planning or at Mercer's website. Students may speak with a financial aid advisor during office hours with no appointment necessary. Students who would like to make appointments may do so by calling 478.301.2670. Additional information is available online at <https://financialaid.mercer.edu/>.

## **Student Health Centers**

478.301.2696

Fax: 478.301.2116

<https://shc.mercer.edu/>

1327 Stadium Drive (inside the Field House)

Clinic Hours are Monday-Friday, 8:00 a.m. to 5:00 p.m.

SPECIAL NOTE: Please call for available appointment schedule times.

The Student Health Center (SHC) provides health services for all Mercer students, regardless of insurance coverage (SHC is considered the primary healthcare provider for students that have the school insurance and students who have this insurance should contact Student Health if appointments or referrals are needed prior to seeking other medical attention unless after hours or in cases of emergency.)

The Student Health Center provides many services including health care for acute illnesses and injuries, allergy injections, immunizations, women's health, health education, and various physical exams. Some students may be referred, depending on the illness/injury, at the discretion of the Student Health Center Staff.

## **The Jack Tarver Library**

Circulation Desk and Checkout: 478.301.2961

<http://libraries.mercer.edu/>

Ceallsach Crouch, Public Service Librarian ([crouch\\_cv@mercer.edu](mailto:crouch_cv@mercer.edu))

Research Specialists: [library\\_reference@mercer.edu](mailto:library_reference@mercer.edu)

The Jack Tarver Library provides services primarily for Mercer University's Macon campus. As part of a University-wide initiative, the Library supports research at all levels. Students have access to group study rooms, computers for individual and group projects, and a 24-hour study area. Partnership with Information Technology enables the Library to offer technology assistance during evening hours. In addition to encouraging student research, the Library offers individual carrels for faculty research. Research assistance is available through instant messaging, email, individual consultations, and classroom instruction.

## **Technology Support Services**

478.301.7000

<https://it.mercer.edu>

Denise Rogers, Director

Auxiliary Services Building

Contact the IT Help Desk if you need technology support: [helpdesk@mercer.edu](mailto:helpdesk@mercer.edu); 478.301.7000.

The mission of Mercer University Information Technology is to support, develop, and maintain Mercer University's Information Technology environment in support of University endeavors and to provide leadership in the application of information technology and computer support.

Additional information is available online about Mercer University's Information Technology Policies at [https://it.mercer.edu/student/about\\_it.htm](https://it.mercer.edu/student/about_it.htm)

### **Wellness and Recreation**

478.301.2370

[rsw.mercer.edu/macon](http://rsw.mercer.edu/macon)

Todd Thomas, Director of Recreational Sports & Wellness (homas\_ta@mercer.edu)

University Center

Please check the website for hours.

The University Fitness Center gym is available for use by Mercer University students, faculty, and staff who hold a valid Mercer ID (Bear card) and their immediate family members. Members of the community may pay to use the gym on a space available basis. Guests may accompany bear card or membership card holders for \$5.00 per visit.

Use of the facility is governed by the rules posted at the check-in desk. Each patron is responsible for reading and adhering to the rules.

The mission of Recreational Sports and Wellness is to provide leadership and direction that engages the students and University community in healthy and active lifestyles through participation in programs, services, and facilities that support the academic mission of the University.

## **Student Organizations**

Mercer University recognizes the significant role of students in institutional decision making. Students in the University's schools and colleges serve with faculty and staff on many committees. Various student government organizations serve as the voice of the students and are liaisons with the administration and faculty. Students at the College of Health Professions are encouraged to cultivate involvement in professional organizations and extracurricular activities while enrolled. A variety of student organizations are available:

### **American Physical Therapy Association (APTA)**

The American Physical Therapy Association (APTA) is an individual membership professional organization representing more than 100,000 member physical therapist (PTs), physical therapist assistants (PTAs), and students of physical therapy. APTA seeks to improve the health and quality of life of individuals in society by advancing physical therapist practice, education, and research, and by increasing the awareness and understanding of physical therapy's role in the nation's health care system. Membership in the APTA is open to all students enrolled in the Department of Physical Therapy.

### **Mercer Public Health Association (MPHA)**

MPHA was founded in October 1999, in the spirit of promoting the values of public health at Mercer University School of Medicine. The mission of MPHA is to create a forum for the exchange of ideas, the accumulation of experiences, the acquisition of information and skills, and the performance of research related to public health issues in communities throughout the state of Georgia, the nation,

and the world. Some of the MPHA collaborations involve community-based public health organizations such as local health departments, local public health agencies, and other organizations such as the Ronald McDonald House. MPHA prides itself on being involved in various community events throughout the year such as the Susan G. Komen Race for the Cure, March of Dimes, and community health fairs.

### **Delta Phi Tau**

The National Physical Therapy Student Honor Society was founded in 2018 by the American Council of Academic Physical Therapy (ACAPT), to recognize exceptional current Doctor of Physical Therapy student achievements in academics, research, service, and leadership. All members of the Society are expected to exemplify the core values of the physical therapy profession.

### **Delta Omega**

The Delta Omega Honorary Society in Public Health was founded in 1924 at Johns Hopkins University within the School of Hygiene and Public Health (now known as the Bloomberg School of Public Health) by two graduate students, Dr. Edgar Erskine Hume and Dr. Claude W. Mitchell. At the time, public health as a profession was still in its infancy and, prior to the establishment of university-based education in public health, entrance into the field had been largely through practical experience and political favor. To promote the graduate study of the field, Dr. Hume and Dr. Mitchell organized this honorary society in order to recognize outstanding achievement in the new field. Over 80 years later, Delta Omega has expanded to more than 70 chapters throughout the world and has more than 14,000 members from top echelons of graduate schools and programs of public health, as well as the public health community.

### **Godsey-Matthews Society**

The Godsey-Matthews Student Society of the American Academy of Physician Assistants (AAPA) was established in 2008 as the official organization for the students of the Mercer University College of Health Professions Physician Assistant Program. The purpose of the Society is to educate and orient all members of the Society to the AAPA; promote the Physician Assistant as a member of the Healthcare delivery team in the medical community and the community at large; provide academic and professional guidance for the incoming class; instill in the Physician Assistant the importance of keeping abreast of current medical advancement; and to serve as the official liaison between the national and state levels of the AAPA, and the College of Health Professions PA Program.

### **Phi Kappa Phi**

The Honor Society of Phi Kappa Phi, founded in 1897, has as its primary objective the recognition and encouragement of superior scholastic endeavor in all academic disciplines. Membership is open to men and women in all academic fields with eligibility being based on excellence of scholarship and integrity of character. Selection for membership in the Honor Society of Phi Kappa Phi is the highest honor that can be earned by a student at Mercer University. In order to be eligible for selection, students in the College of Health Professions must rank scholastically in the upper ten percent of all students currently enrolled in the College. The student must have an outstanding scholastic record as evaluated by the chapter selection committee, must have been registered as a student in the College on a full-time basis for at least one academic year, or its equivalent, or must have been a former post-

baccalaureate student who has been awarded an advanced degree by the University subsequent to the last previous election of members to the chapter.

### **Simons Society**

The David G. Simons Society is the student organization for all Physical Therapy students enrolled in the program. In all aspects of its function, the Simons Society will pursue the core values of altruism, accountability, caring and compassion, excellence, integrity, professional duty and social responsibility for the student physical therapist as a future healthcare provider.

### **National Athletic Training Association (NATA)**

The National Athletic Trainers' Association (NATA) is the professional membership association for certified athletic trainers and others who support the athletic training profession. Founded in 1950, NATA has grown to more than 45,000 members worldwide today. The majority of certified athletic trainers choose to be members of NATA to support their profession and to receive a broad array of membership benefits. The mission of NATA is to represent, engage, and foster the continued growth and development of the athletic training profession and athletic trainers as unique healthcare providers. Membership in NATA is open to all students enrolled in the Athletic Training program.

### **National Rural Health Association**

The National Rural Health Association (NRHA) is a national nonprofit membership organization with more than 20,000 members. The association's mission is to provide leadership on rural health issues. NRHA membership consists of a diverse collection of individuals and organizations, all of whom share the common bond of an interest in rural health.

### **Mercer Athletic Training Club**

The Athletic Training Club aims to engage students who are interested in sports medicine. The club includes educational, service, and fundraising events. Undergraduate and graduate students are welcome to join.

### **Mercer Clinical Psychology Student Association**

The PsyD Student Association exists as an avenue for student self-governance and promotion of the mission of the Department, to prepare psychologists as integrated health care practitioners who contribute to and apply scientific knowledge of human behavior to benefit individuals, systems, and society.

## ***Class Officers-Doctor of Physical Therapy***

### ***Doctor of Physical Therapy – Class of 2025***

Drew Boyett – President

Ben Wynn – Vice President

Mackenzie Koon – Secretary/Treasurer

### ***Doctor of Physical Therapy – Class of 2026***

Erika Young – President

Yuuki Ando – Vice President

Amaiah Young – Secretary/Treasurer

***Simons Society***

Najda Sahovic – President

Phoenix Jampol – Vice President

Kelsey Davis – Secretary

Madison Split – Treasurer

Class of 2025 Representatives: Jackie Coates, Toyosi Adesinasi

Class of 2026 Representatives: Mackenzie Burke and Tre Verrett

Faculty Student Governance Advisor: Dr. Dan Dale

***Class Officers-Physician Assistant***

***Godsey-Matthews Society – Class of 2025***

Ryan Watkins – President

Riley Gillis – Vice President

Thao Ngo – Secretary

***Godsey-Matthews Society – Class of 2026***

Darby Glackin – President

Yazmin Ramos – Vice President

Rina Patel – Secretary

Faculty Advisor: Professor Jonathan Hill

***Class Officers-Public Health***

***MPH Student Advisory Board Representatives***

Shonali Makadiya – President

Cecilia Hicks – Vice President

Shravani Sirsat – Treasurer

Mili Patel – Secretary

Oreoluwa Aladetoyinbo and Megan Pitts – Admissions Committee

John Mammie and Susana Carlos – Curriculum Committee

Jarrold Wilkinson and Chaitanya Avvaru – Service & Workforce Committee

Asia Foster and Iyanuoluwa Daomi – Research & Evaluation Committee

Faculty Advisor: Dr. Cheryl Gaddis

***Mercer Public Health Association Officers***

Megan Pitts – President

Sophia DiOrio – Vice President

Merrick Gessler – Secretary

Shravani Sirsat – Treasurer

Faculty Advisor: Dr. Dawood Sultan



## ***Class Officers-Clinical Psychology***

Kayla Jones – Class of 2027 & 2028 representative  
Falak Hussain – Class of 2026 representative  
Eliana Pimentel – Class of 2025 representative  
Head Representative – McKenzie Rowland

Faculty Advisor: Dr. Davielle Lakind

## ***Class Officers – Athletic Training***

### ***Mercer University Athletic Training Club***

Zanetria Shorty – President  
TBD – Vice President  
Amari Lyons – Secretary  
Taylor Brooks – Treasurer  
Elaine Williams – Social Media Coordinator  
Shola Ogunde – Community Service Coordinator

Faculty Advisor: Dr. Rachel Le

## **Campus Student Organizations and Activities**

There are a variety of organizations on campus specific to each college/school. There are a growing number of campus-wide groups that you can also join, which include the Baptist Student Union (BSU), the Program Council and Delta Sigma Theta. To get involved, share a program idea, or if you are interested in starting a new organization that would be open to the campus community, please contact the Assistant Dean for Campus Life.

### **Wellness and Recreation**

Wellness and Recreation classes can be taken at the Sheffield Center. The Center houses a basketball court, swimming pool and weight room with many exercise and weightlifting machines. A variety of fitness classes are also offered each semester in order to help students maintain a healthy lifestyle.

For a complete detailed listing of all student organizations please click link below:

<http://campuslife.mercer.edu/atlanta/student-orgs/list/>

## Mercer Alma Mater

<b>Macon Campus</b>	<b>Atlanta Campus</b>
<p>On the city's western border            Reared against the sky            Proudly stands our Alma Mater            As the years roll by</p> <p>(Chorus)            Forward ever be they watchword            Conquer and prevail.            Hail to thee, O Alma Mater!            Mercer, Hail, all Hail!</p> <p>Cherished by thy sons and daughters            Mem'ries sweet shall throng            Round our hearts, O Alma Mater            As we sing our song.</p>	<p>On the city's eastern border            Reared against the sky            Proudly stands our Alma Mater            As the years roll by</p> <p>(Chorus)            Forward ever be they watchword            Conquer and prevail.            Hail to thee, O Alma Mater!            Mercer, Hail, all Hail!</p> <p>Cherished by thy sons and daughters            Mem'ries sweet shall throng            Round our hearts, O Alma Mater            As we sing our song.</p>

# Appendix A

## *Mercer University Student Code of Conduct*

**Changes may be made to the Student Code of Conduct during the school year. The most up-to-date and complete version can be found in the Mercer University Student Handbook at [www.mercer.edu/provost/handbooks](http://www.mercer.edu/provost/handbooks)**

**COMMUNITY OF RESPECT** Mercer University strives to be a *Community of Respect* where everyone is held in mutual high regard. Because every human being is created in the image of God, each person deserves to be treated with respect and civility. Standards of conduct are based on the values of mutual respect:

*Respect for Academic Integrity* We value a community that encourages an academic atmosphere. We believe that honesty is important to learning.

*Respect for Other Persons* We value the worth of every individual in the community and we respect the dignity of each member in the community. We take responsibility for the consideration of the rights of others.

*Respect for the University Community* We value showing respect for the rights and property of others. We take responsibility to act to maintain University property.

*Respect for Community Authority* We acknowledge and value our privileges and rights as members of the University community. We take responsibility for acting to uphold community standards.

These values are codified into the following Student Code of Conduct, which includes a general overview of the process, a listing of unacceptable student conduct, possible sanctions, and other key information. This Student Code of Conduct applies to all students on all campuses, including online programs, and supersedes any student conduct policies and procedures previously used by colleges or programs. Program-specific regulations and policies (including professional standards) may apply to students beyond those outlined here and may be found in supplemental handbooks. Nothing in this policy prohibits these academic programs from pursuing additional review and action of professional standards as appropriate to their professions. Students are expected to be aware of and conduct themselves in a manner that is in compliance with all applicable policies found in the University Student Handbook and related campus supplements. Academic violations are handled through a separate process found in the academic Honor Code. For more information about policies and procedures related to the Student Code of Conduct, please refer to the Mercer University Student Handbook available on the Mercer website at:

<http://provost.mercer.edu/handbooks/studenthandbook.cfm>.

## **Appendix B**

### ***Student Leadership Group***

The Student Leadership Group is an organization of selected College of Health Professions students representing each academic class and each discipline. The objectives of the Student Leadership Group shall be:

- To establish centralized communication between the students and faculty/administration
- To promote and perpetuate professionalism in all endeavors pertaining to Mercer
- To communicate and promote student events within the College

The Student Leadership Group will consist of one student representative per academic class per year for each discipline. Participation in all meetings and activities of the group is an expectation for all appointed representatives. Membership in the Student Leadership Group shall be limited to students with an overall grade point standing of 3.0 or better, with conduct in accordance with the Code of Professional Conduct outlined in the Student Handbook. One student per each academic class will be selected by the respective program cohort and/or the Program Director to serve on the Student Leadership Group:

- Physical Therapy: entering class representative appointed each October
- Physician Assistant: entering class representative appointed each February
- Public Health: entering class representative appointed each October
- Clinical Psychology: entering class representative appointed each October
- Athletic Training: entering class representative appointed each August

The College advisor shall be the Director of Admissions and Student Affairs and will serve in an advisory capacity. The Director of Admissions and Student Affairs will schedule at least one meeting per semester with the Student Leadership Group at a time that accommodates all representatives' academic schedules; additional meetings will be scheduled as needed. The advisor will be available for consultation with any of the Student Leadership Group representatives, as needed, and should attend all Student Leadership Group meetings.

## **Appendix C**

### ***Student Ambassadors***

Student Ambassadors are current students who are selected by the Admissions and Student Affairs team to represent Mercer University's College of Health Professions in the public arena.

Ambassadors represent the college and its respective programs in a positive, enthusiastic, and professional manner. The Student Ambassador Group will consist of student representatives for each discipline.

Student Ambassadors may be asked to participate in a variety of different programs including Open House/Info Session events, new student orientation, White Coat Ceremony, and possibly college and/or career fairs.

The College advisor shall be the Director of Admissions and Student Affairs and will serve in an advisory capacity. The Director of Admissions and Student Affairs will schedule at least one meeting per semester with the Student Ambassador Group at a time that accommodates all representatives' academic schedules; additional meetings will be scheduled as needed.

## **Appendix D**

### ***Honor Council Constitution***

The Honor Council Constitution provides fundamental principles that govern the Honor System. The Bylaws provide specific rules of guidance for the Honor Council. Procedures related to Honor Systems and Academic Integrity are outlined in the Mercer University Student Handbook and can be found on the Provost web site at: <https://provost.mercer.edu/office-of-the-provost/honor-system/>